

Supporting Information

Reductive Ullmann Coupling of Aryl Halides by Palladium Nanoparticles Supported on Cellulose, a Recoverable Heterogeneous Catalyst

Mohammad Ali Rasouli and Parviz Rashidi Ranjbar

School of Chemistry, University of Tehran, Tehran, Iran

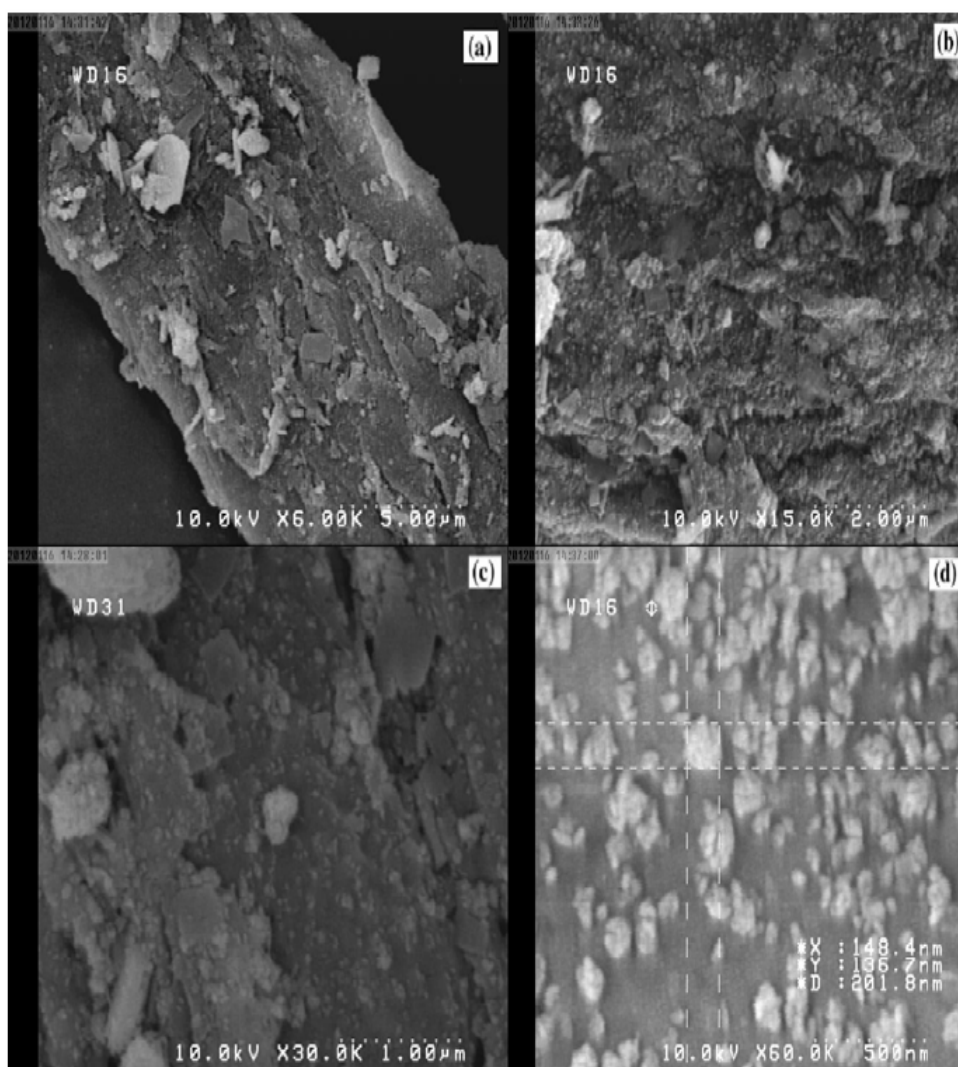


Fig. S-1. SEM photographs of palladium nanoparticles supported on cellulose.

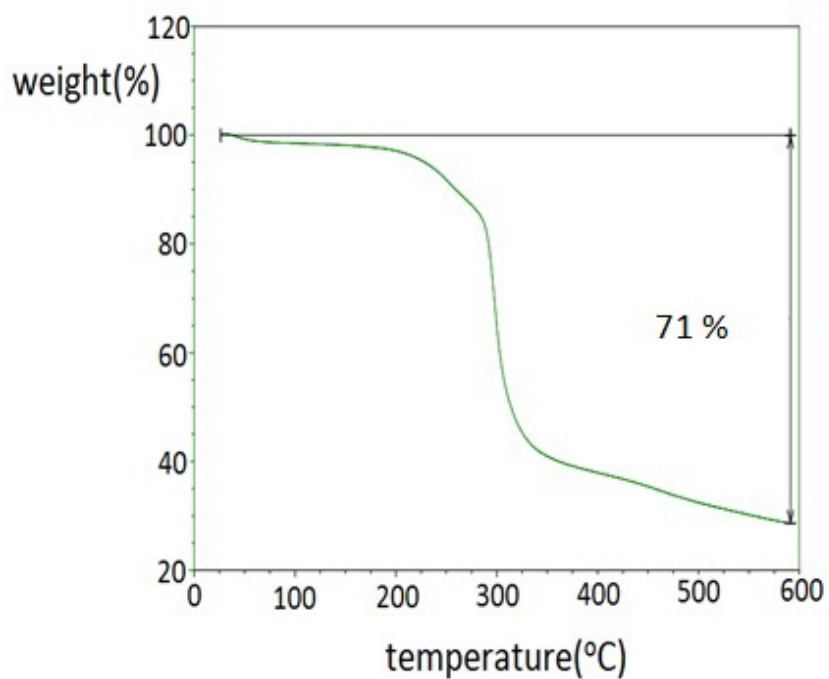


Fig. S-2. TGA curve of palladium particles supported on cellulose.

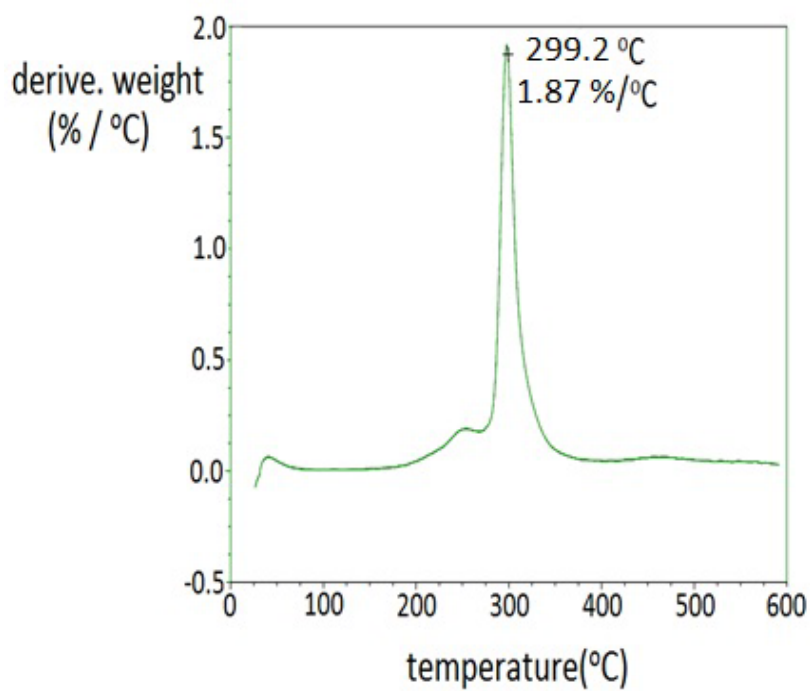


Fig. S-3. Thermogravimetric dW/dT curve of palladium nanoparticles supported on cellulose.