

Supporting Information

Structure Elucidation of Submilligram Quantities of Natural Products – Application to Haliclamine G and H from the Arctic Marine Sponge *Haliclona viscosa*

Christine Cychon, Gesine Schmidt, Thorsten Mordhorst, and Matthias Köck*

*Alfred-Wegener-Institut für Polar- und Meeresforschung in der Helmholtz-Gemeinschaft,
Am Handelshafen 12, 27570 Bremerhaven, Germany*

*Corresponding author: Tel: +49 471 4831 1497, Fax: +49 471 4831 1425,
e-mail: mkoeck@awi.de*

Figure S1. 1D ¹ H NMR spectrum of haliclamine G (1) in CDCl ₃ , 298 K, 400 MHz.	2
Figure S2. 1D ¹³ C NMR spectrum of haliclamine G (1) in CDCl ₃ , 298 K, 400 MHz.	2
Figure S3. ESI-TOF MS spectrum of haliclamine G (1) obtained from coupled HPLC-MS.	3
Figure S4. 1D ¹ H NMR spectrum of haliclamine H (2) in CDCl ₃ , 298 K, 400 MHz.	3
Figure S5. 1D ¹³ C NMR spectrum of haliclamine H (2) in CDCl ₃ , 298 K, 400 MHz.	4
Figure S6. ESI-TOF MS spectrum of haliclamine H (2) obtained from coupled HPLC-MS.	4
Figure S7. ESI-TOF MS spectrum of haliclamine C (5) obtained from coupled HPLC-MS.	4
Figure S8. ESI-TOF MS spectrum of haliclamine F (8) obtained from coupled HPLC-MS.	5

Haliclamine G (**1**, 10/10)

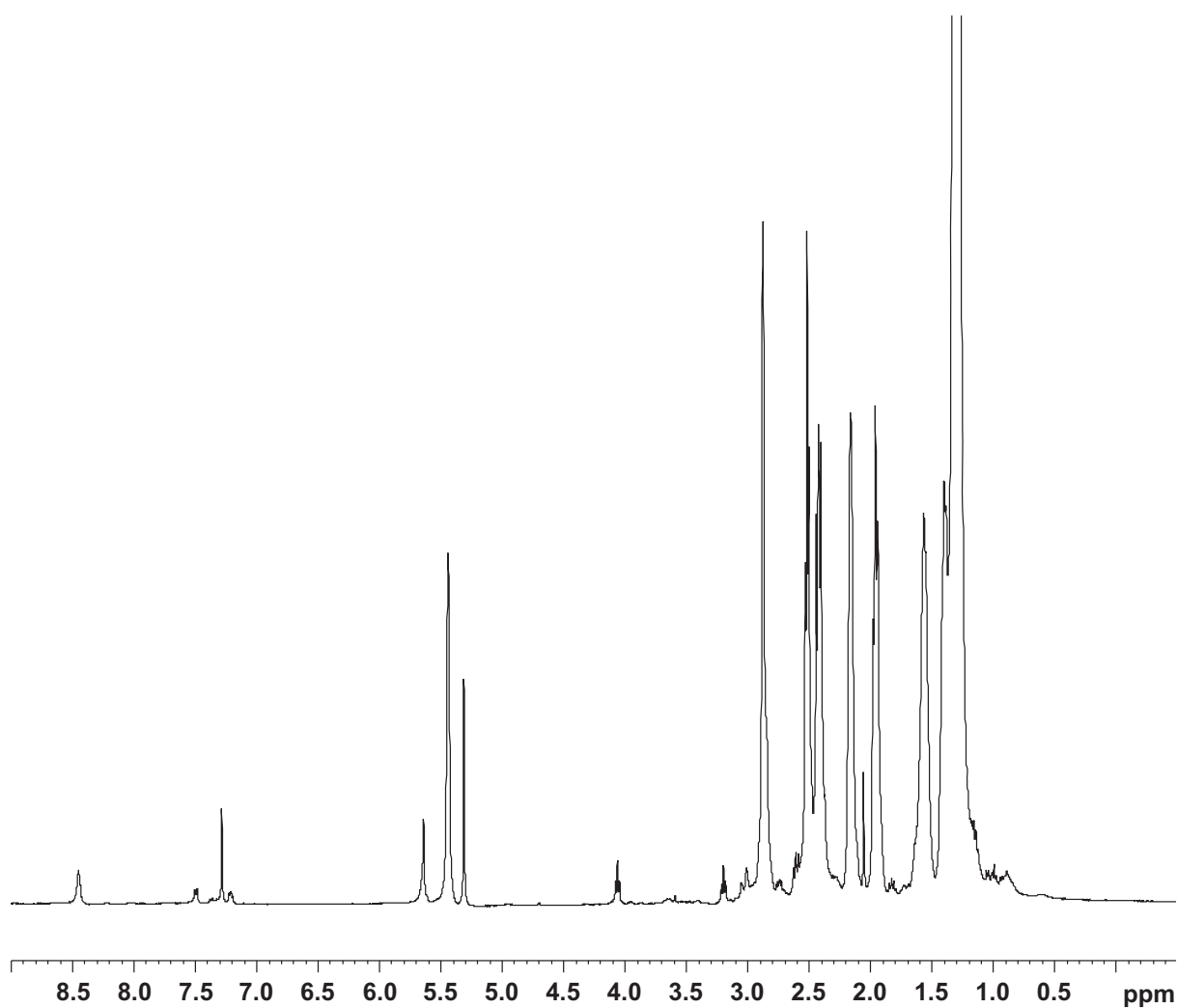


Figure S1. 1D ¹H NMR spectrum of haliclamine G (**1**) in CDCl₃, 298 K, 400 MHz.

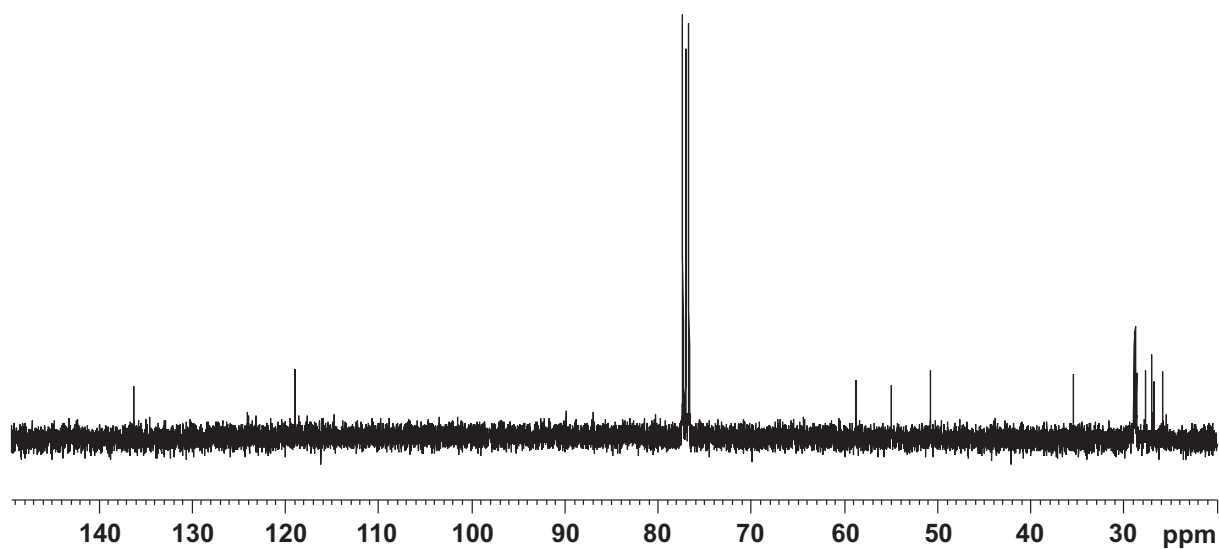


Figure S2. 1D ¹³C NMR spectrum of haliclamine G (**1**) in CDCl₃, 298 K, 400 MHz.

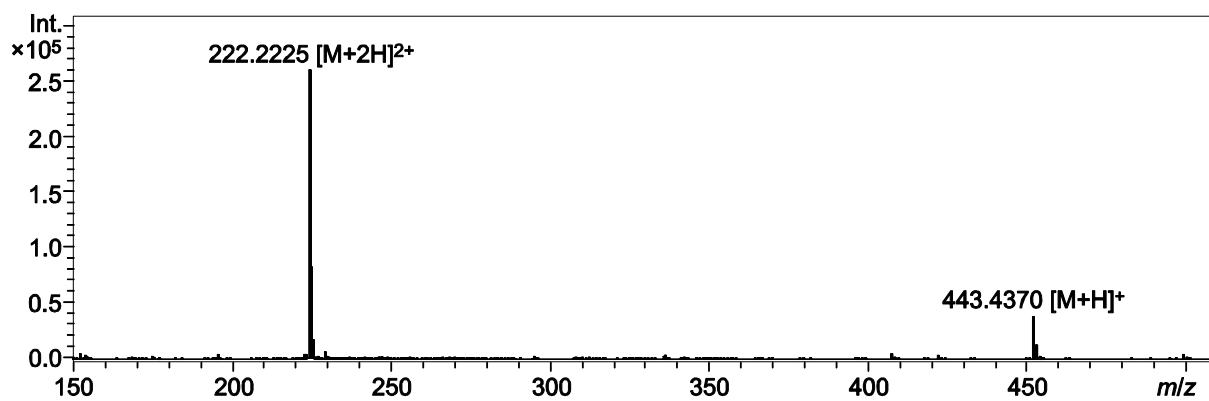


Figure S3. ESI-TOF MS spectrum of haliclamine G (**1**) obtained from coupled HPLC-MS.

Haliclamine H (**2**, 10/12)

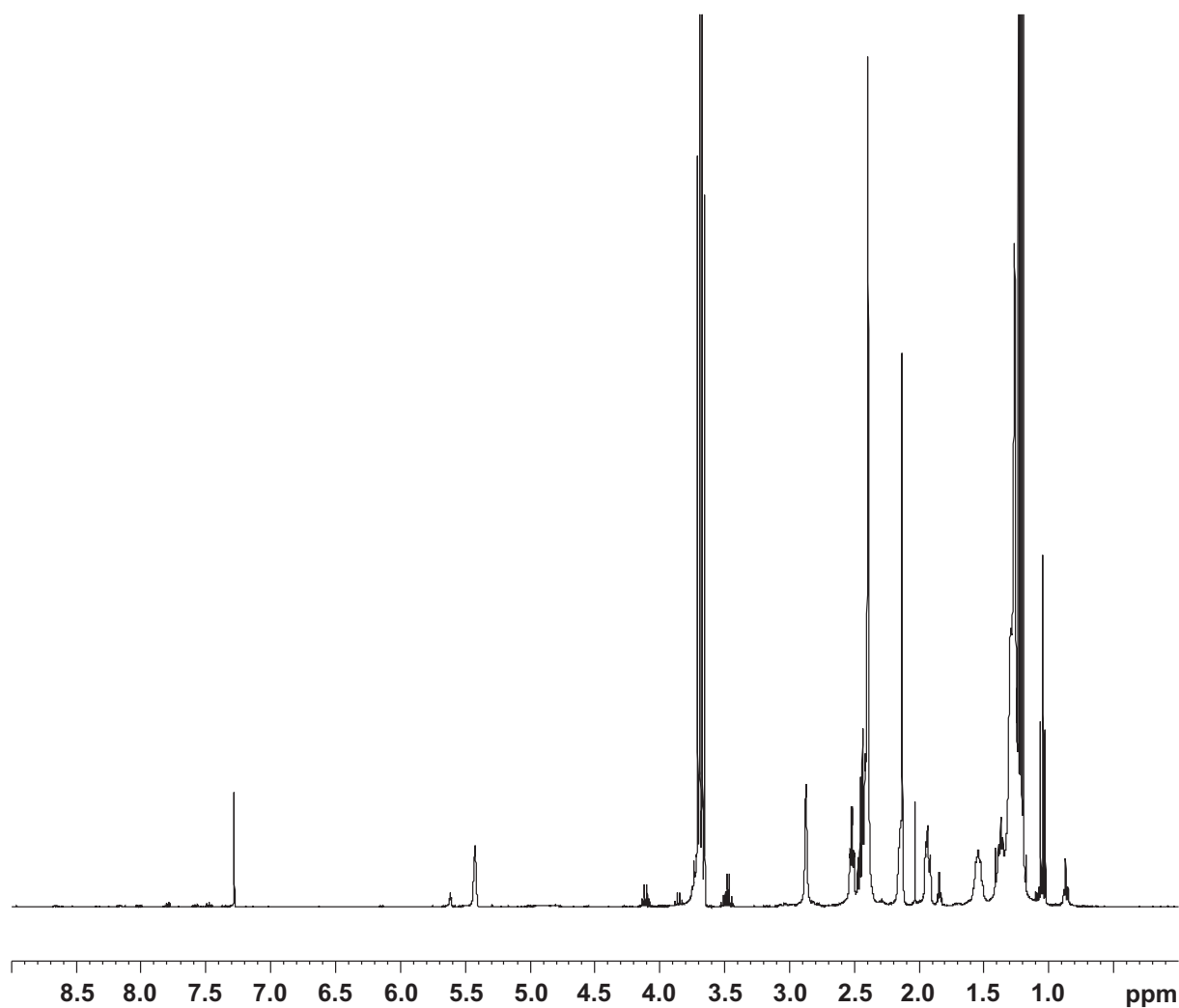


Figure S4. 1D ¹H NMR spectrum of haliclamine H (**2**) in CDCl₃, 298 K, 400 MHz.

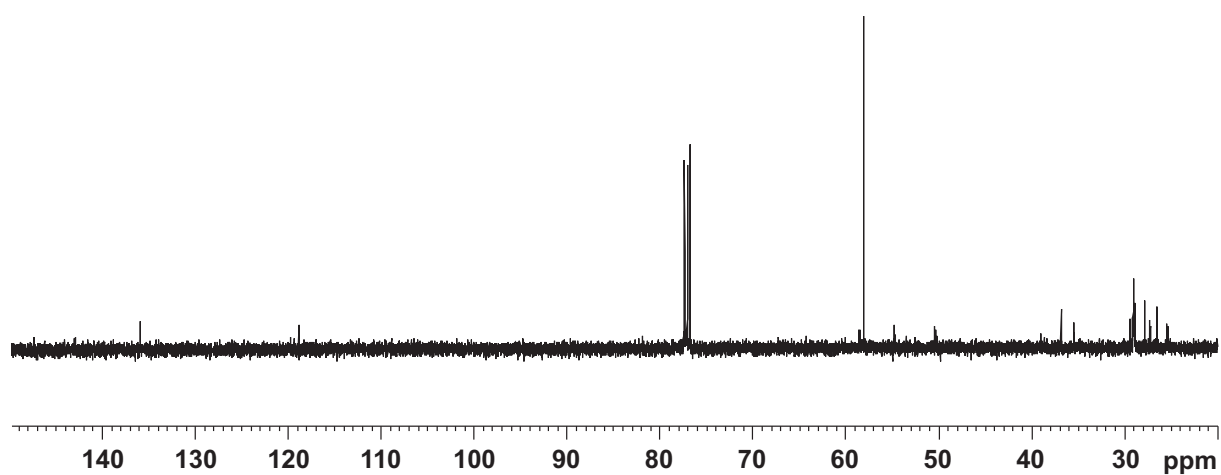


Figure S5. 1D ^{13}C NMR spectrum of haliclamine H (**2**) in CDCl_3 , 298 K, 400 MHz.

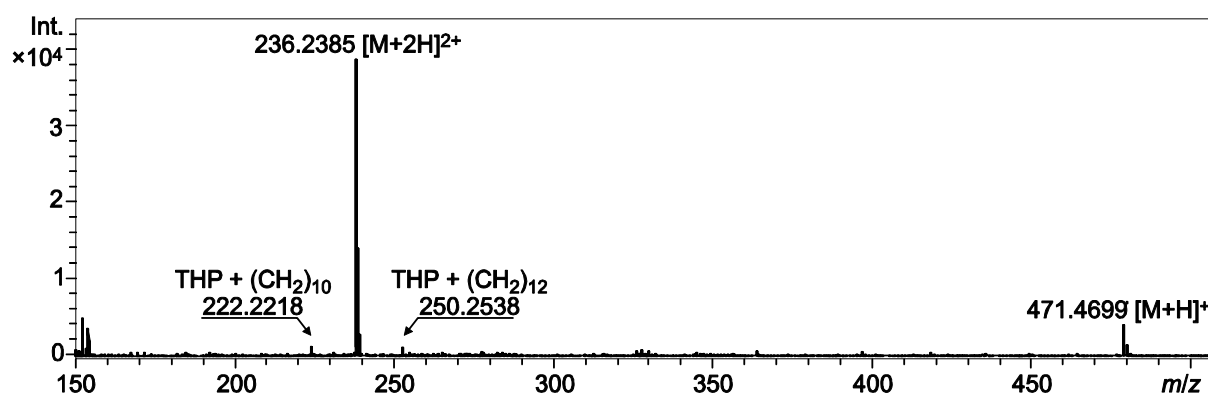


Figure S6. ESI-TOF MS spectrum of haliclamine H (**2**) obtained from coupled HPLC-MS.

Haliclamine C (**5**, 9/11)

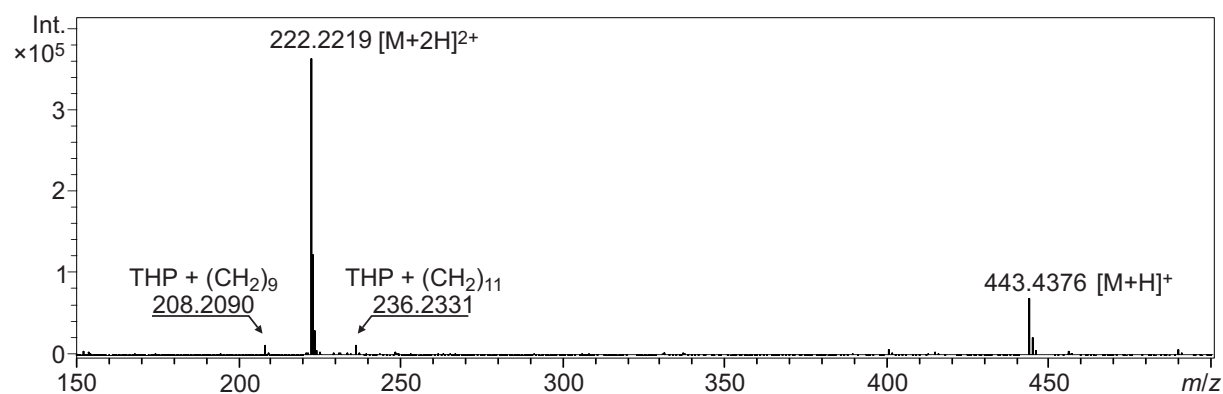


Figure S7. ESI-TOF MS spectrum of haliclamine C (**5**) obtained from coupled HPLC-MS.

Haliclamine F (**8**, 11/11)

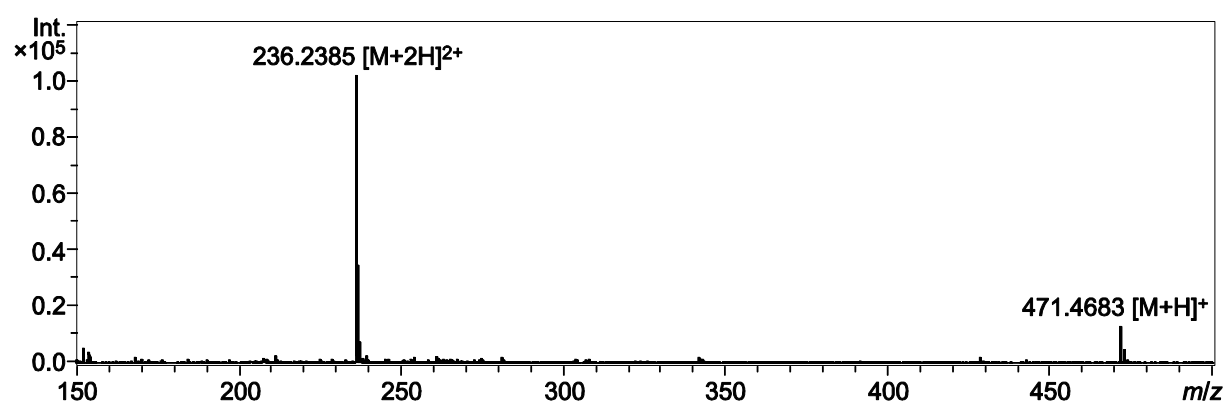


Figure S8. ESI-TOF MS spectrum of haliclamine F (**8**) obtained from coupled HPLC-MS.